

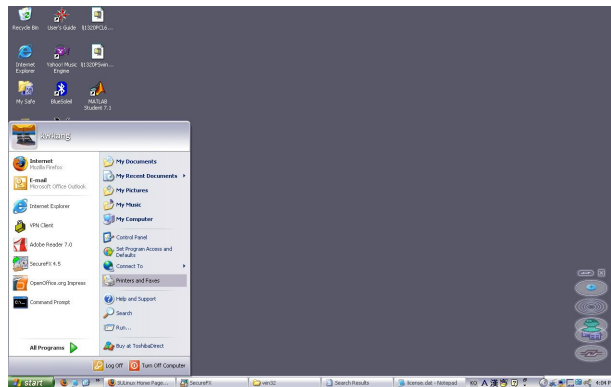
How-to-configure a network printer through Linksys PSUS4 print server in Win XP

Keonwook Kang

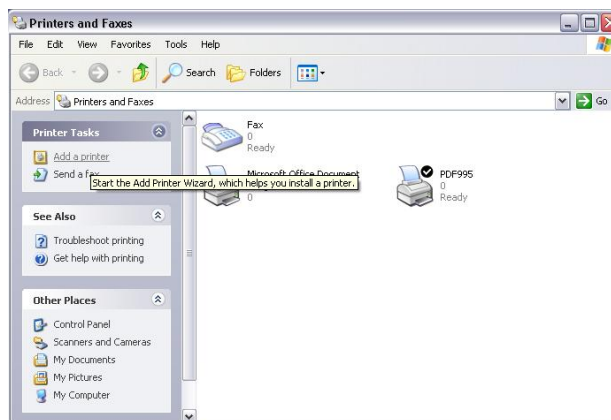
October 2, 2007

In this short How-to report, I will explain how to set up a network printer using TCP/IP printer port. This method requires that the network printer has a static IP address, you know what the IP address is and there is no firewall between the printer and your local machine.

1. Click “start” and “Printers and Faxes” to open.



2. Click “add printer”.



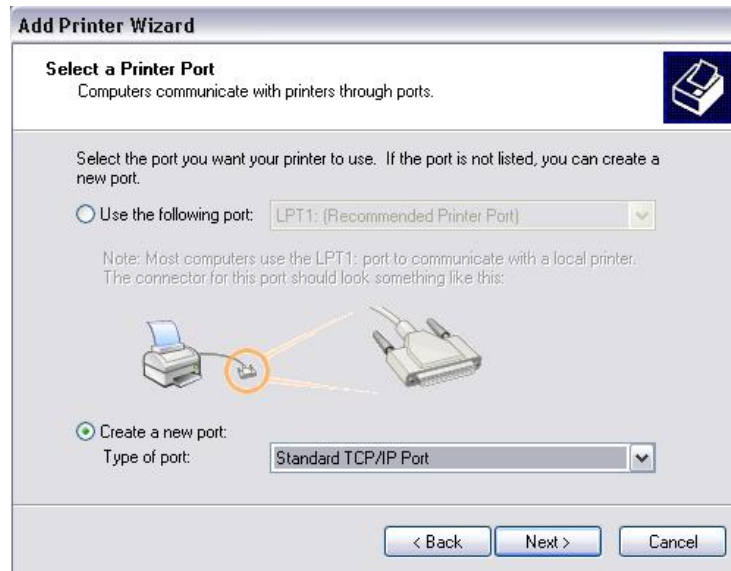
3. Type "Next" when you see Add Printer Wizard.



4. Select "Local printer attached to this computer" and click "Next".



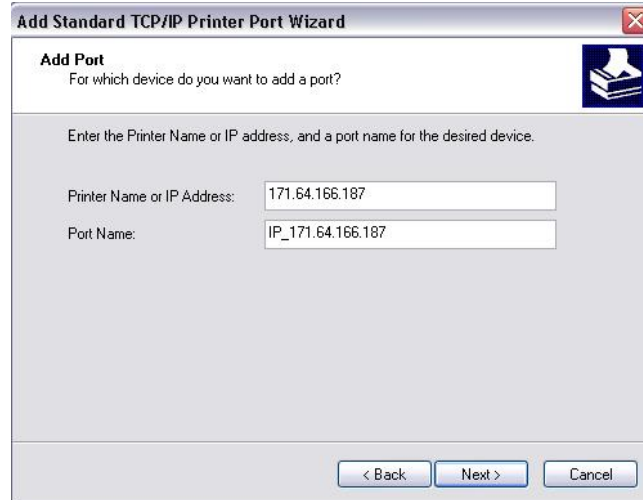
5. Select “Create a new port” and choose Standard TCP/IP Port in the drop-down menu. Click “Next”.



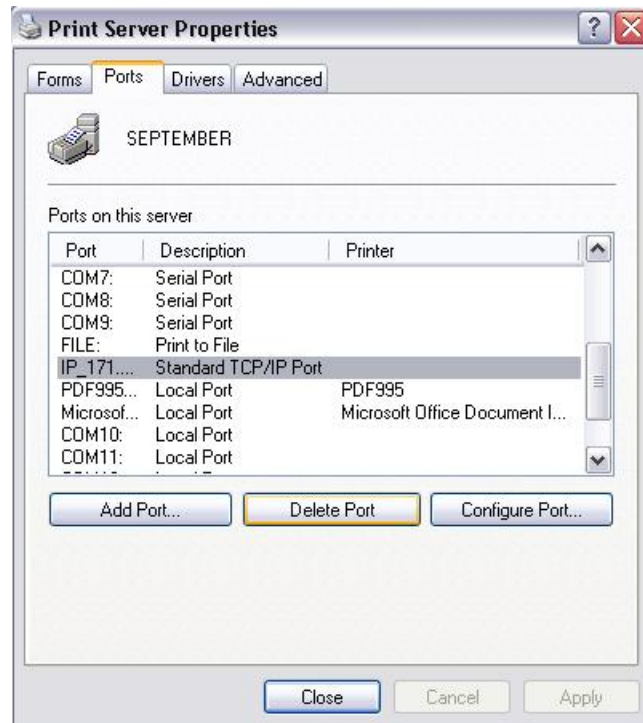
6. You see a window of Printer Port Wizard as shown in the below. Click “Next”.



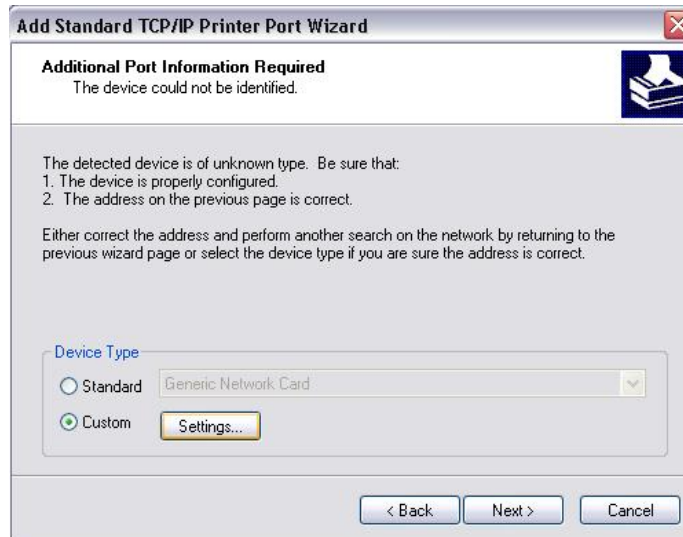
7. Type the network printer IP address and click “Next”.



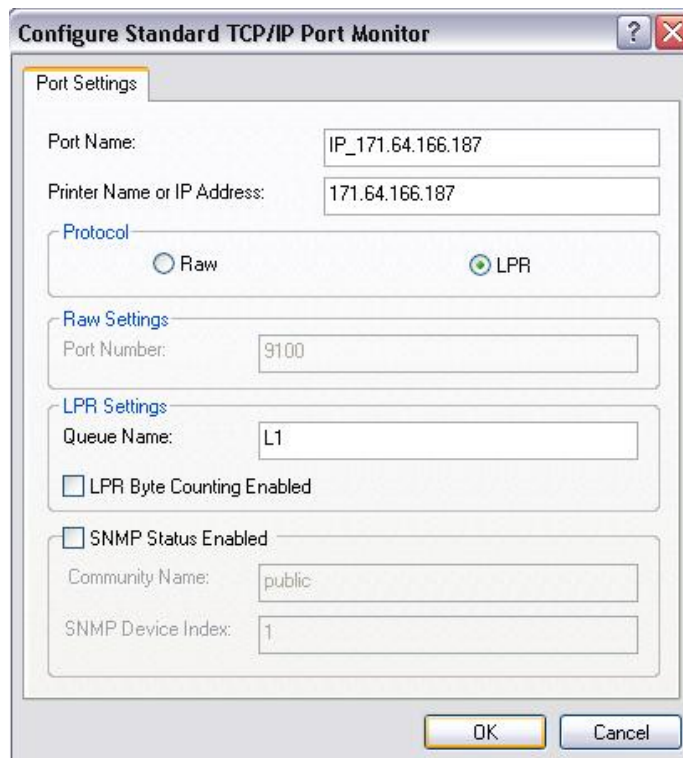
8. If you see an error saying “A port with that name already exists. Choose another port name”, click File-Server Properties in the window of Printers and Faxes. In the window as shown below, delete the port with the same name.



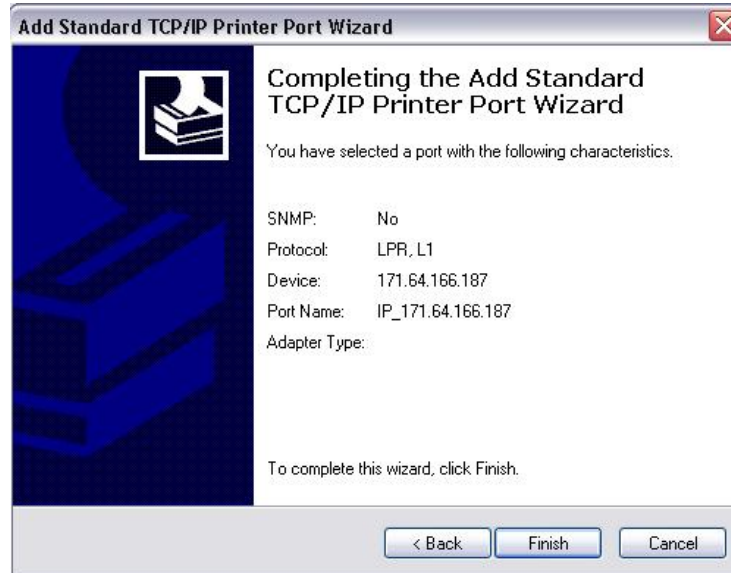
9. Select Custom and click Settings.



10. Select “LPR” in Protocol and type “L1” for queue name. L1 means parallel port 1.



11. Click “Next” in the window of “Add Standard TCP/IP Printer Port Wizard” and you will see the following window. Click “Finish”.



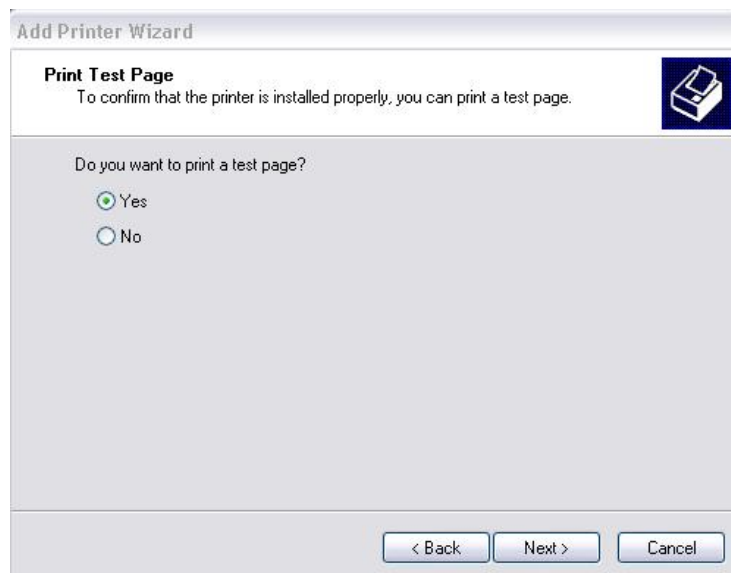
12. Install printer driver. Select your printer’s manufacturer and appropriate driver. Click “Next”. In case you do not have HP Laserjet 1320 driver, you can download it from the HP website, <http://h20000.www2.hp.com/bizsupport/TechSupport/SoftwareIndex.jsp?lang=en&cc=us&prodNameId=410624&prodTypeId=18972&prodSeriesId=410622&swLang=8&taskId=135&swEnvOID=228>



13. Type printer name and click "Next".



14. Print a test page to see if the network printer is installed properly. Click "Next".



15. After all, you will see the following window and you are done.



References

- [1] http://linksys.custhelp.com/cgi-bin/linksys.cfg/php/enduser/std_adp.php?p_faqid=4126&lid=