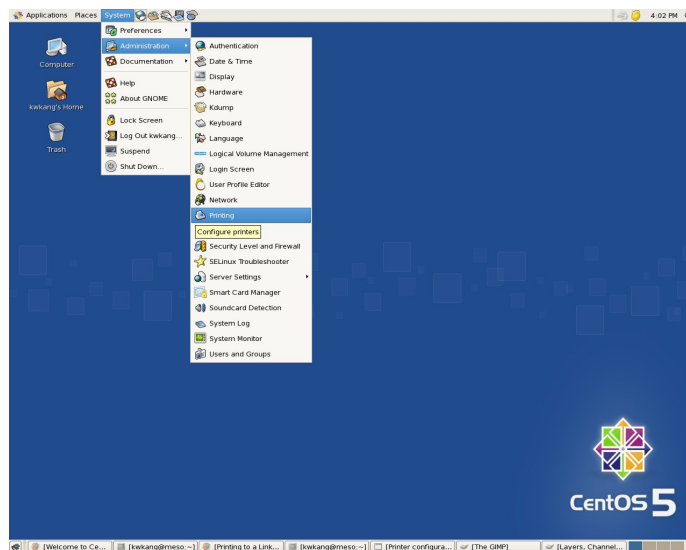


# How-to-configure a network printer through Linksys PSUS4 print server in CentOS 5

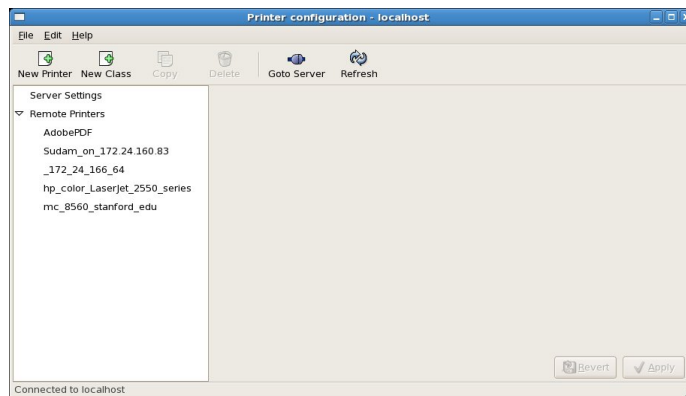
Keonwook Kang

November 21, 2007

1. Click System-Administration-Printing and type root password.



2. Click New Printer.

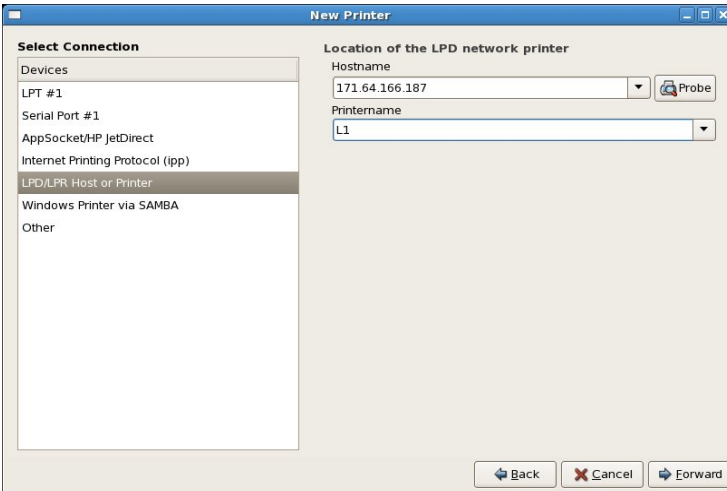


3. Type printer name, description and location.



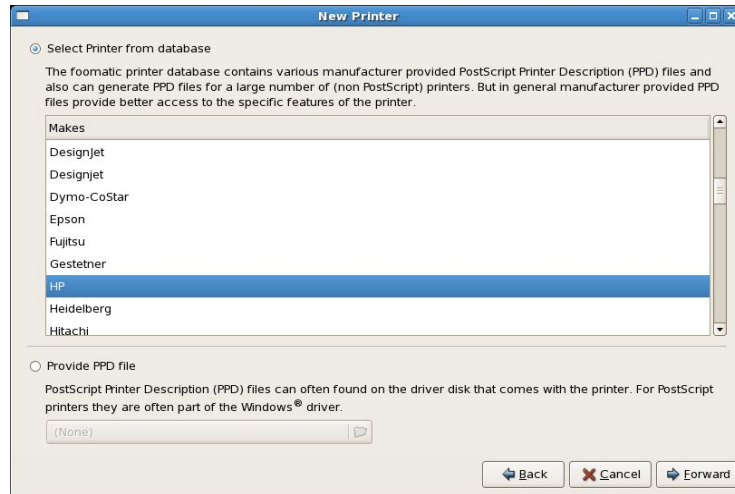
The screenshot shows a window titled "New Printer" with three input fields. The first field, "Printer Name", contains "meceng-lj1320-rm204". The second field, "Description", contains "HP\_Laserjet1320". The third field, "Location", contains "rm204". At the bottom right, there are "Cancel" and "Forward" buttons.

4. Select LPD/LPR Host or Printer and fill hostname and printername as shown the figure below.

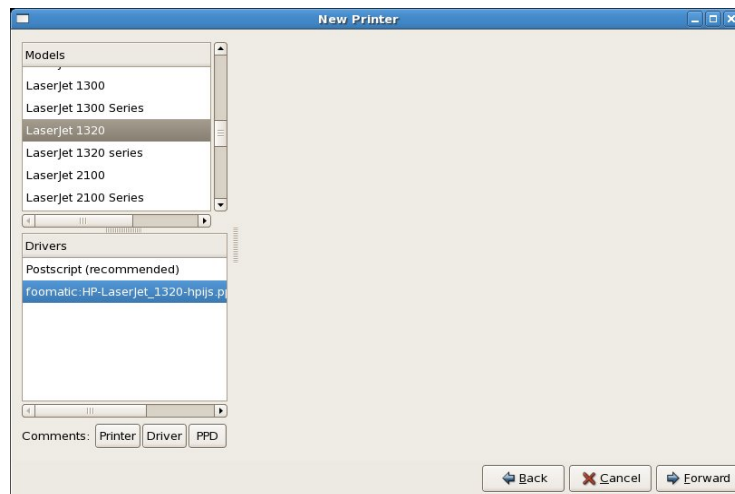


The screenshot shows the "New Printer" dialog box with the "LPD/LPR Host or Printer" option selected in the "Select Connection" list. The "Location of the LPD network printer" section has "Hostname" set to "171.64.166.187" and "Printername" set to "L1". A "Probe" button is next to the hostname field. At the bottom, there are "Back", "Cancel", and "Forward" buttons.

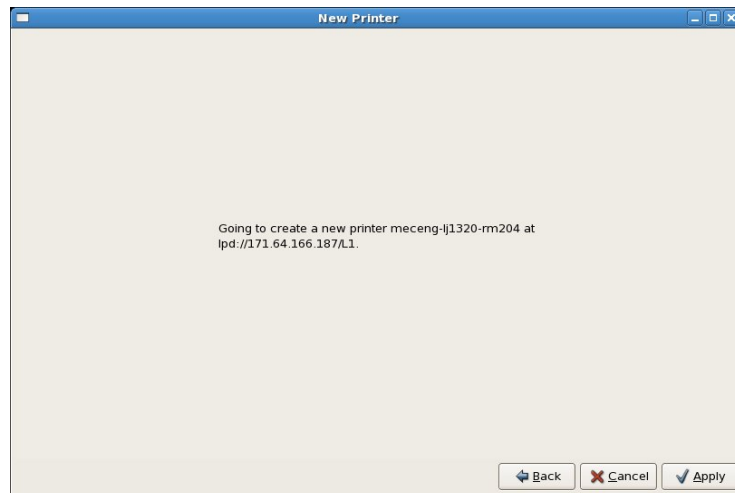
5. Select printer maker.



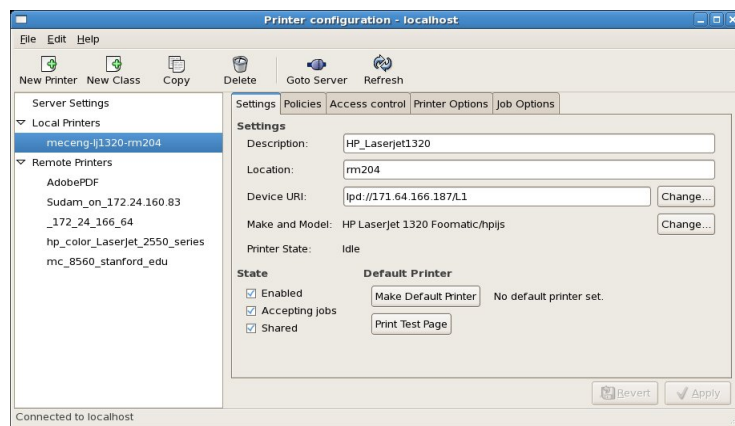
6. Select printer model and driver.



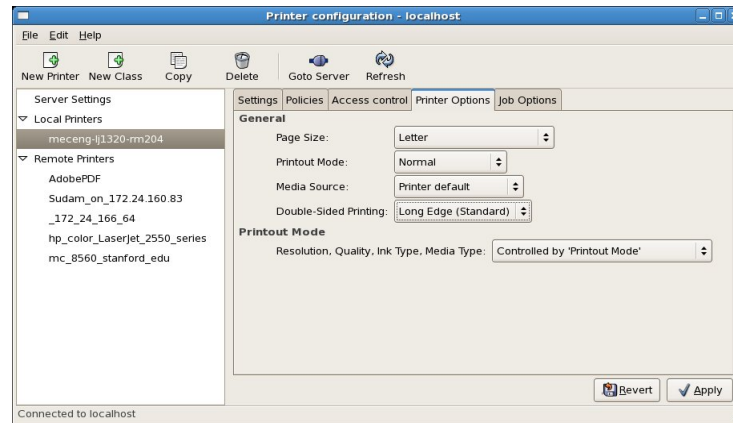
7. Click Apply.



8. You will see a new printer added in the printer configuration window. Make it as a default printer if you want. You can print a test page.



9. Depending on printer model, you can activate double-sided printing in Printer Options.



## References

- [1] Ref. <http://www.linuxquestions.org/questions/showthread.php?t=373157>